

Suggested Solution to Exercise 1: Modelling a Business Process of a Zoo

Erik Perjons

DSV, Stockholm University



Domain Description

- Zoo International is a company with eight zoos in different European cities. Zoo International has specify an introduction process that all zoos should follow. The introduction process describes how an animal should be introduced when it first arrives at a zoo.
- First, one of the zoo administrators checks the documentation about the animal that is delivered together with the animal by the supplier of the animal. If some required documents are missing, the administrator ask for additional documents from the supplier of the animal. As soon as the additional documents has arrived it is checked again, and if some documents still are missing, the administrator asks the supplier for these documents as well, and so on until all required documents are received.
- When the administrator has received all documents, he/she registers the animal. After that, a medical investigation is carried out by one of the zoo's veterinarians if a veterinarian is available, if not, the animal is introduced to its "cage colleagues" (i.e. other animals in the cage where the animal should stay) under supervision of animal keepers at the zoo. Both these two activities need to be carried out, but the order could differs depending on the availability of a veterinarian. When these two activities are completed, the introduction process is finished.



Your Task

- Describe the introduction process at a zoo using UML Activity Diagram



Decide goal and perspective

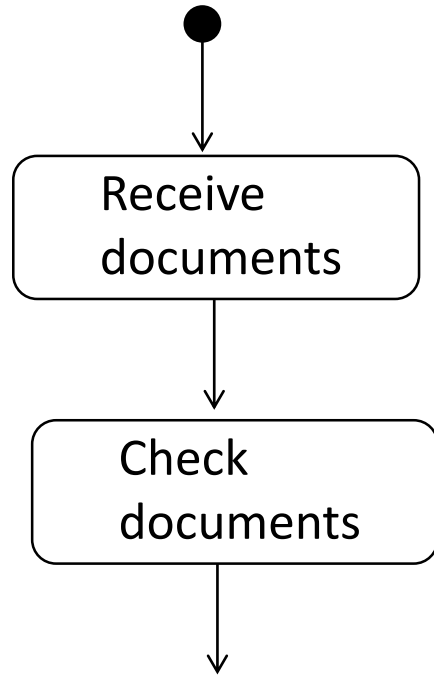
- *Goal of Business Process Model:* To standardize the introduction process (for quality or efficiency reason?)
- *Perspective of Business Process Model:* Executive/Management's perspective



Domain Description

- Zoo International is a company with eight zoos in different European cities. Zoo International has specify an introduction process that all zoos should follow. The introduction process describes how an animal should be introduced when it first arrives at a zoo.
- First, one of the zoo administrators checks the documentation about the animal that is delivered together with the animal by the supplier of the animal. If some required documents are missing, the administrator ask for additional documents from the supplier of the animal. As soon as the additional documents has arrived it is checked again, and if some documents still are missing, the administrator asks the supplier for these documents as well, and so on until all required documents are received.
- When the administrator has received all documents, he/she registers the animal. After that, a medical investigation is carried out by one of the zoo's veterinarians if a veterinarian is available, if not, the animal is introduced to its "cage colleagues" (i.e. other animals in the cage where the animal should stay) under supervision of animal keepers at the zoo. Both these two activities need to be carried out, but the order could differs depending on the availability of a veterinarian. When these two activities are completed, the introduction process is finished.

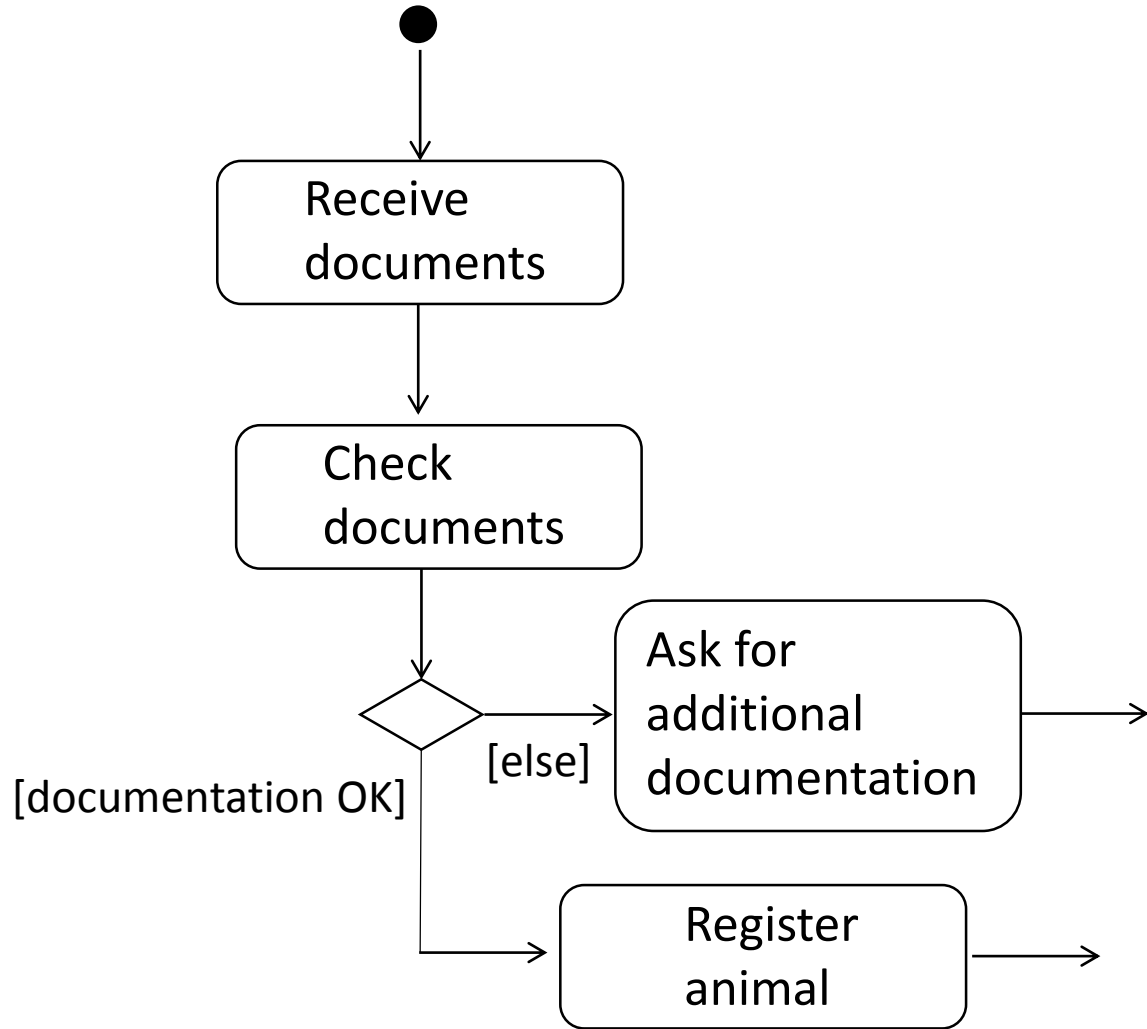


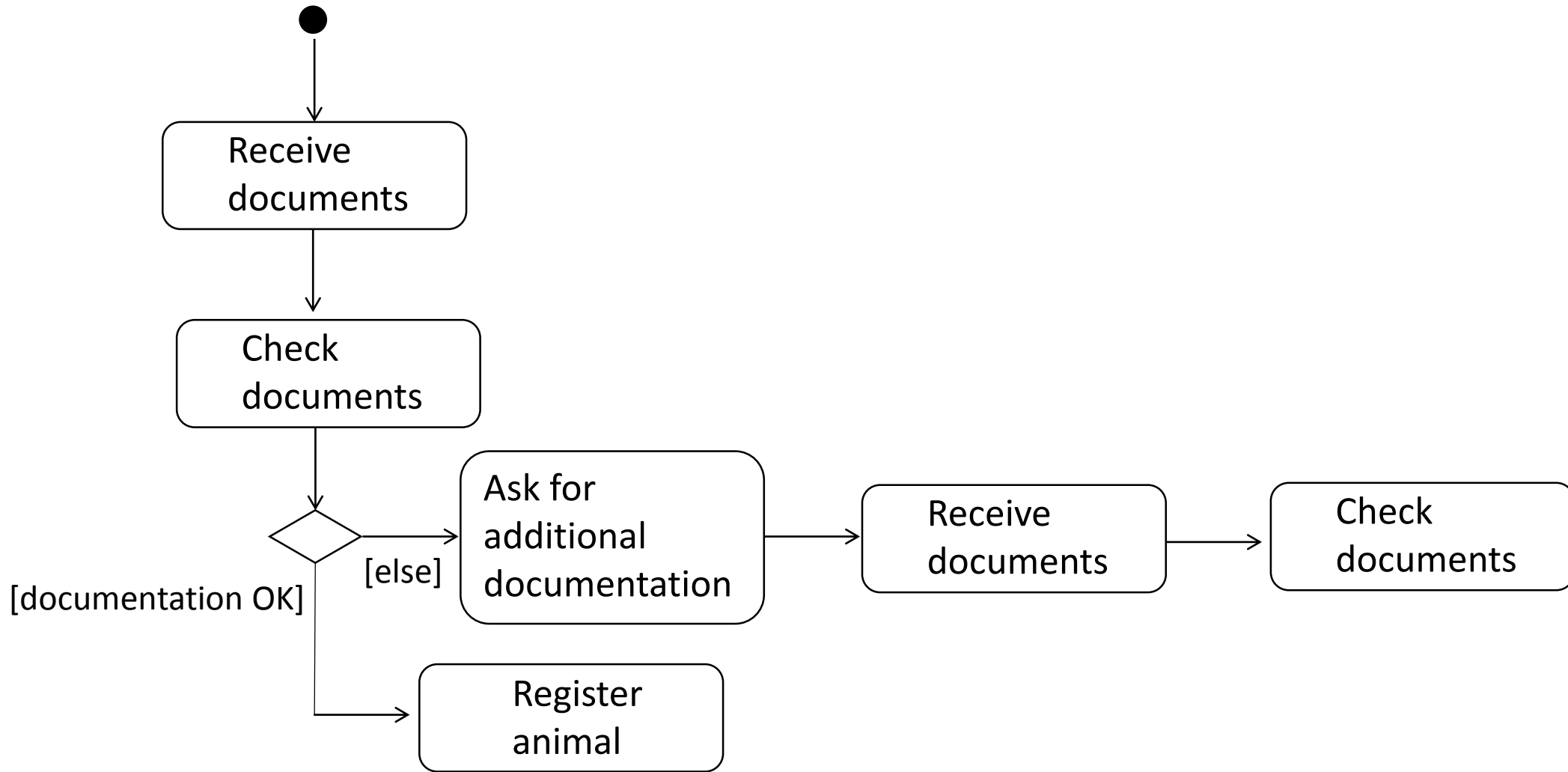


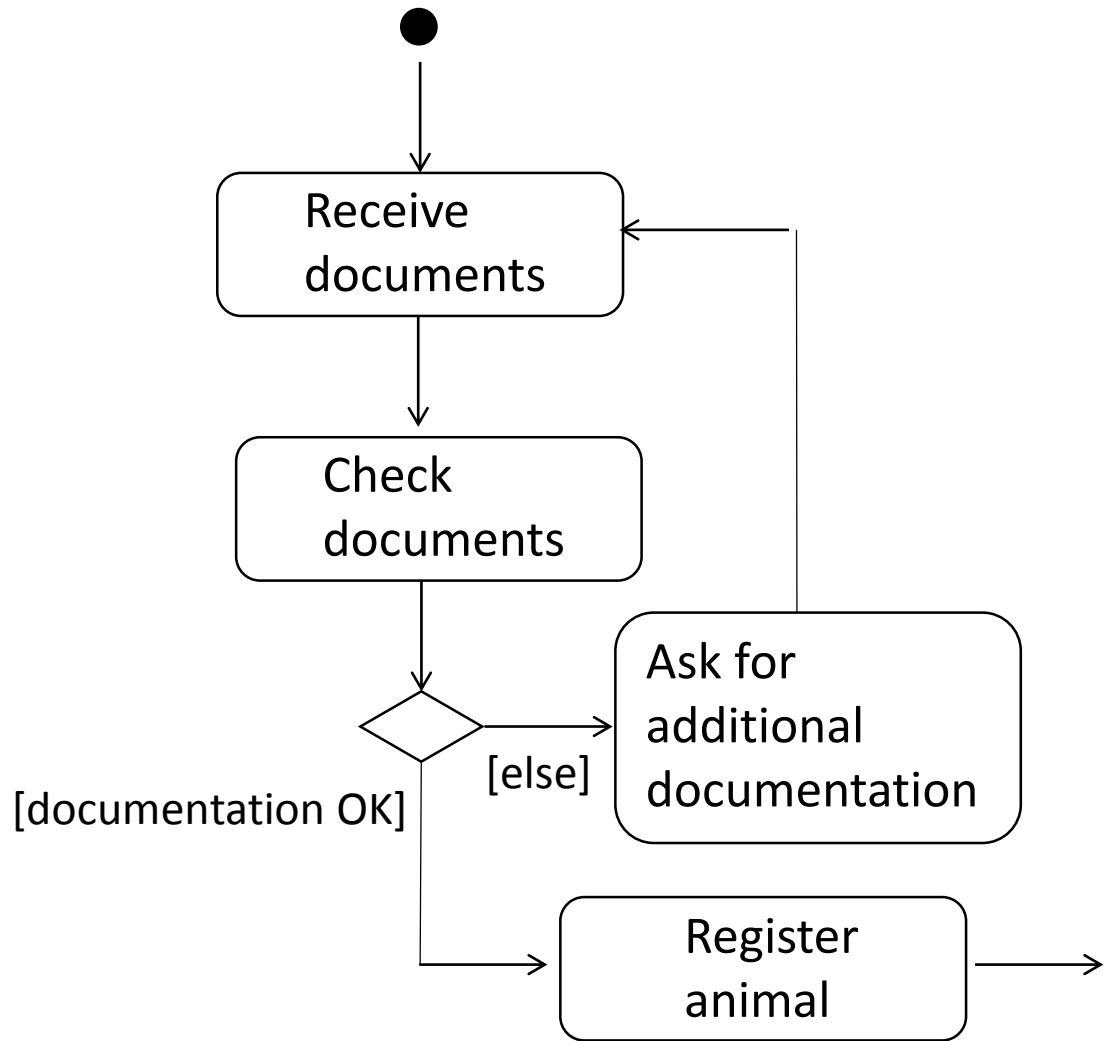
Domain Description

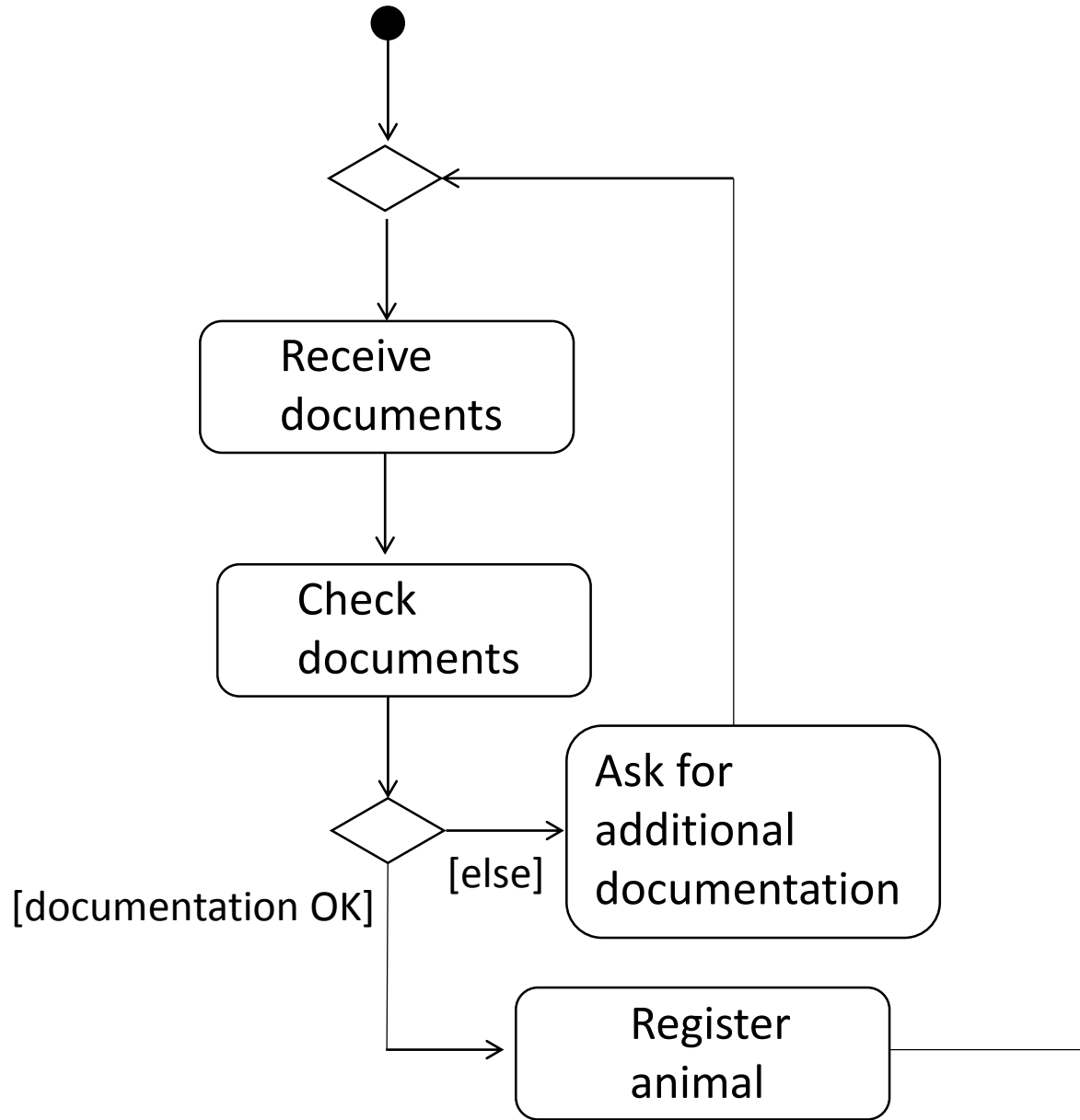
- Zoo International is a company with eight zoos in different European cities. Zoo International has specify an introduction process that all zoos should follow. The introduction process describes how an animal should be introduced when it first arrives at a zoo.
- First, one of the zoo administrators checks the documentation about the animal that is delivered together with the animal by the supplier of the animal. If some required documents are missing, the administrator ask for additional documents from the supplier of the animal. As soon as the additional documents has arrived it is checked again, and if some documents still are missing, the administrator asks the supplier for these documents as well, and so on until all required documents are received.
- When the administrator has received all documents, he/she registers the animal. After that, a medical investigation is carried out by one of the zoo's veterinarians if a veterinarian is available, if not, the animal is introduced to its "cage colleagues" (i.e. other animals in the cage where the animal should stay) under supervision of animal keepers at the zoo. Both these two activities need to be carried out, but the order could differs depending on the availability of a veterinarian. When these two activities are completed, the introduction process is finished.

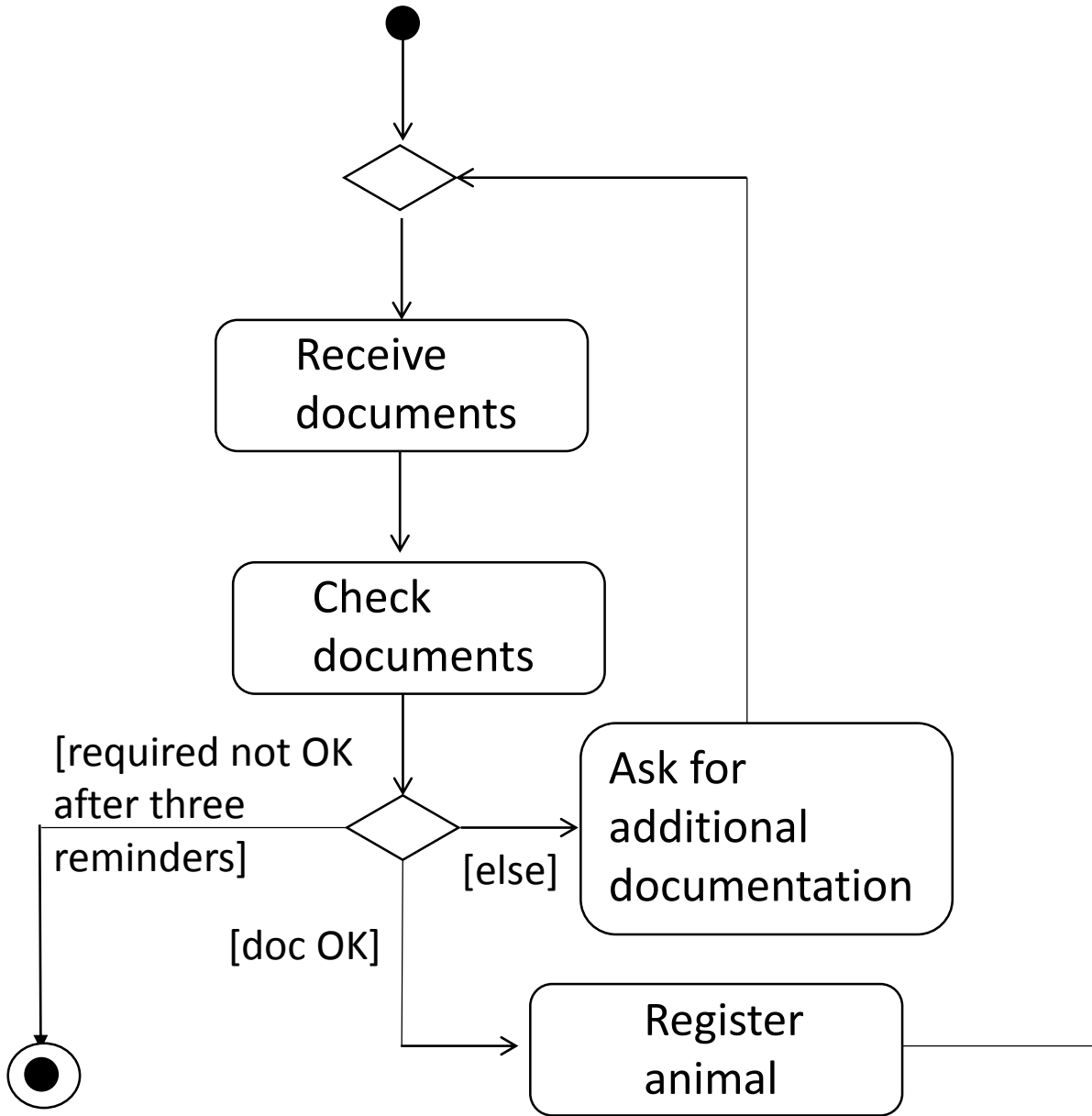












Domain Description

- Zoo International is a company with eight zoos in different European cities. Zoo International has specify an introduction process that all zoos should follow. The introduction process describes how an animal should be introduced when it first arrives at a zoo.
- First, one of the zoo adminstrators checks the documentation about the animal that is delivered together with the animal by the supplier of the animal. If some required documents are missing, the adminstrator ask for additional documents from the supplier of the animal. As soon as the additional documents has arrived it is checked again, and if some documents still are missing, the adminstrator asks the supplier for these documents as well, and so on until all required documents are received.
- When the adminstrator has received all documents, he/she registers the animal. After that, a medical investigation is carried out by one of the zoo's veterinarians if a veterinarian is available, if not, the animal is introduced to its "cage colleagues" (i.e. other animals in the cage where the animal should stay) under supervision of animal keepers at the zoo. Both these two activities need to be carried out, but the order could differs depending on the availability of a veterinarian. When these two activities are completed, the introduction process is finished.



