

# Processes Modelling with UML Activity Diagram

Erik Perjons

# Question to answer

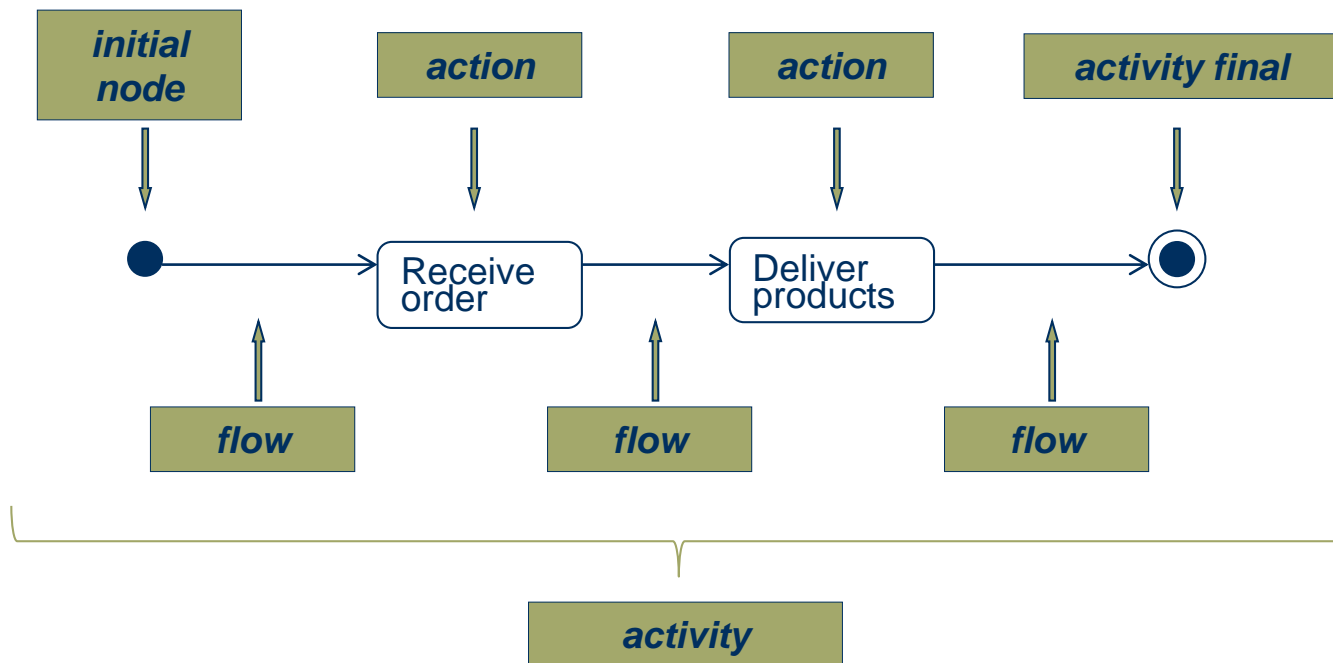
- How do you model business processes using a formal business process modelling language, in this case UML Activity Diagram?

# UML Activity Diagram

# UML Activity Diagram



# UML Activity Diagram



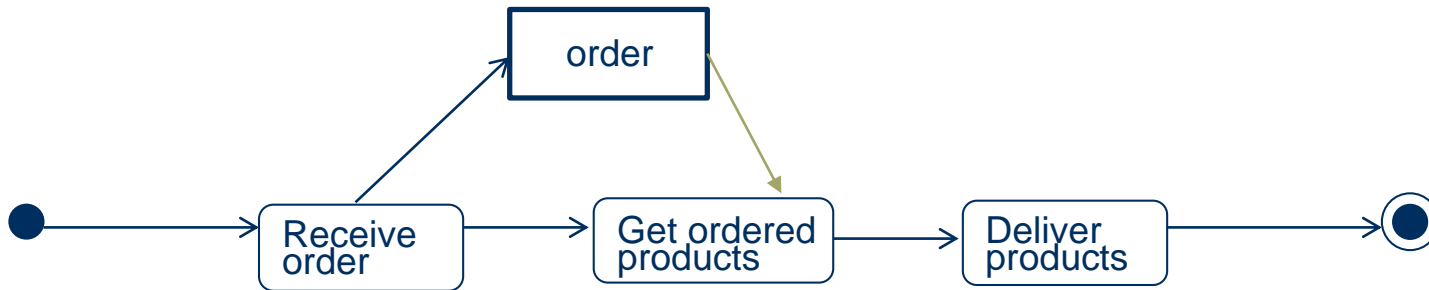
# The Control Flow

- The flow symbol (i.e. the arrow) represents the order of actions. For example, the action "Receive order" should be carried out before the action "Get ordered products"
- The order of actions in an activity (or process) is sometimes called the control flow (which differs from the data or information flow)

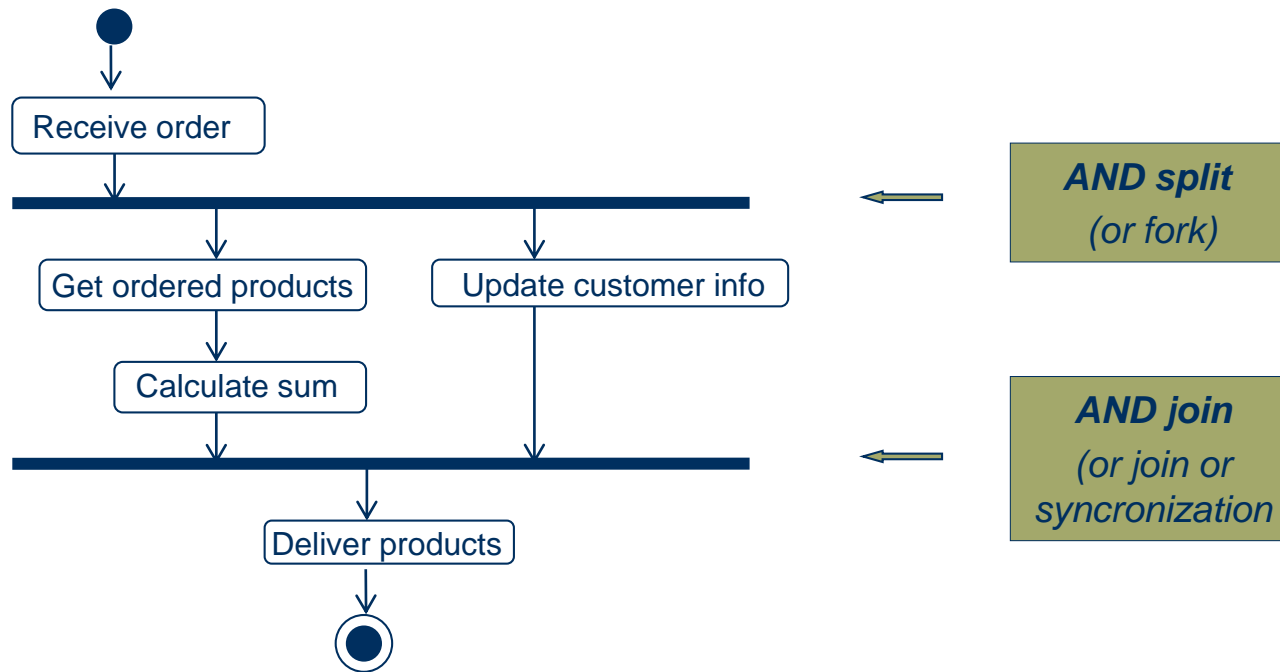


# The Information Flow

- It is also possible in UML Activity Diagram to model the flow of data or information
- The flow of data or information is shown as a labeled box, and it model explicitly the input to and output from actions



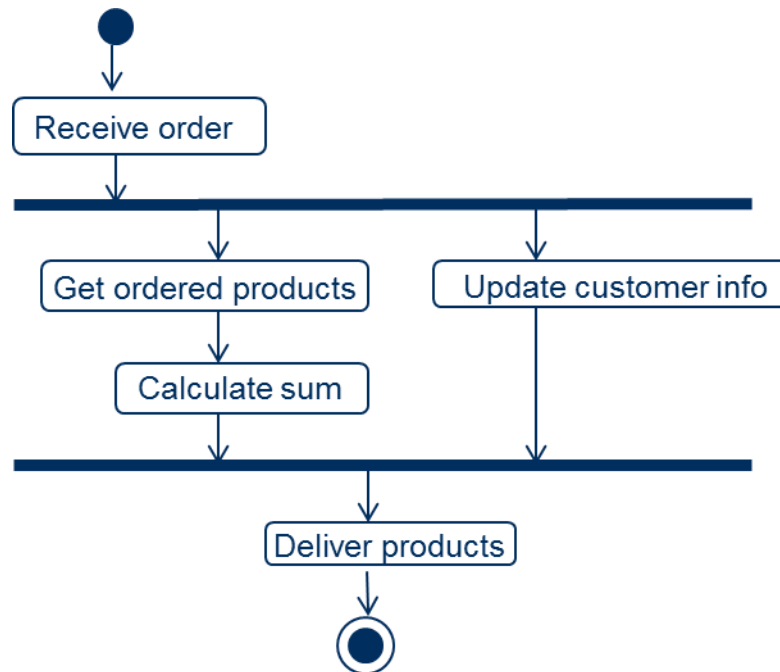
# Control flow: Parallel behaviour





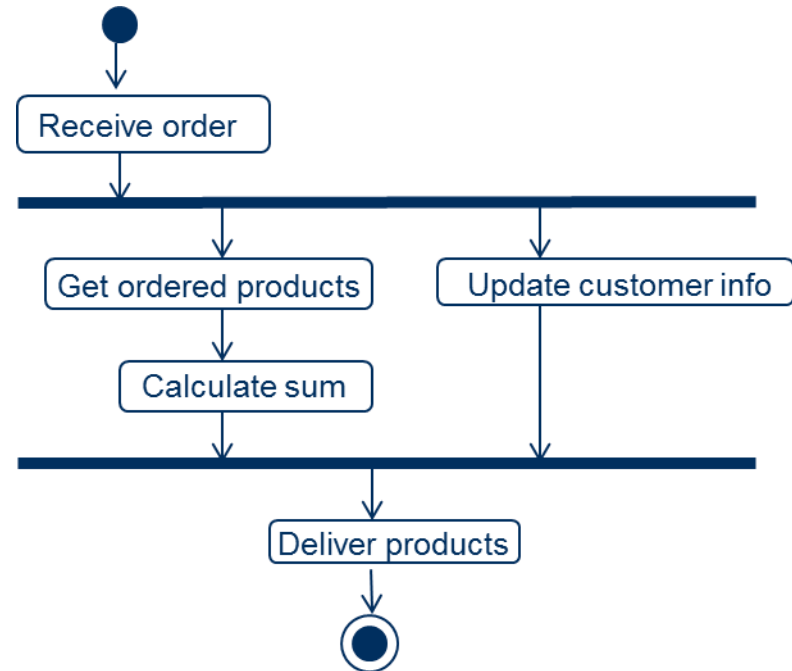
# Control flow: Parallel behaviour

- An **AND split** has one flow in and several flows out
- An **AND join** has several flows in and one flow out

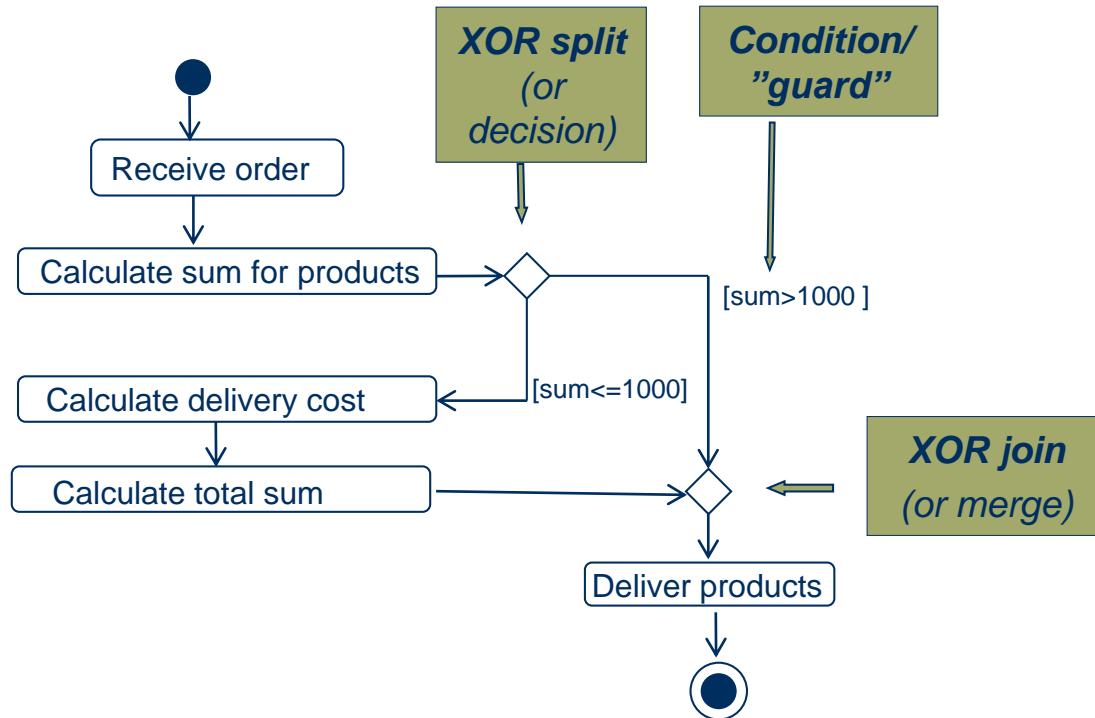


# Control flow: Parallel behaviour

- **Guidline:** Parallel behaviour can be used in two situations:
  - Situation 1: Two actions occure in the same time
  - Situation 2: Two actions can occure in any order which is not specified

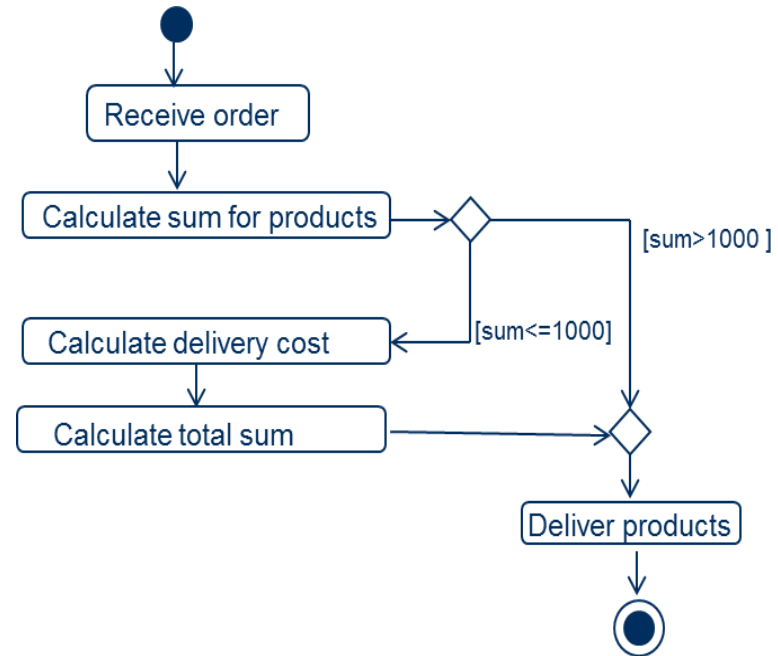


# Control flow: Conditional behaviour



# Control flow: Conditional behaviour

- An **XOR split** has one flow in and several flows out. The condition/guard must be true for a process instance to choose a certain path
- An **XOR join** has several flows (edges) in and one flow out



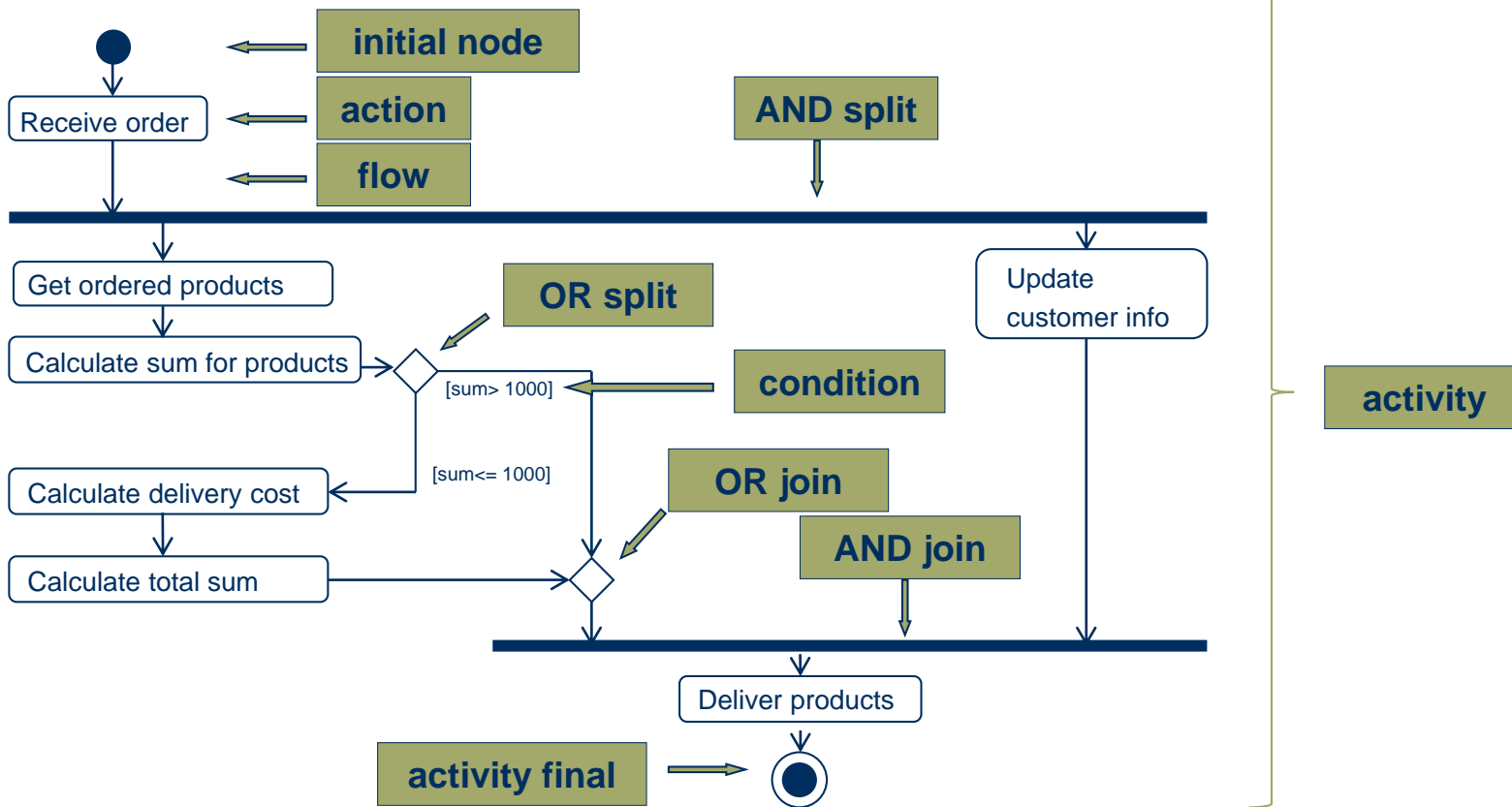
# Guidelines

- **Guideline:** UML does not use the terms AND split and AND join, and OR split and OR join (UML use the terms forks, join, decision and merge), but I recommend the use of these terms, because they are easy to remember and can be used in different business process languages
- **Guideline:** If possible, each AND split should be followed by an AND join later in the activity (process)
- **Guideline:** If possible, each OR split should be followed by an OR join later in the activity (process)

# More Guidelines

- **Guidelines:** Start an activity with one initial node (although UML Activity Diagram does not forbid to have several initial nodes in an activity) – since it is a common requirement for business process models to have one start node
- **Guideline:** Several activity final nodes can be used

# Completed example



# Question to answer

- How do you model business processes using a formal business process modelling language, in this case UML Activity Diagram?



# Medverkande

Erik Perjons – Lärare

Jonas Collin – Mediepedagog

Inspelat 2015-08-30

Institutionen för data- och systemvetenskap, DSV



Stockholms  
universitet